



Overview:

This half term we are learning about our local area. We live in a town called Bilston.

How well do you know Bilston?

Which places in the town have you seen or visited?

The United Kingdom And West Midlands

Bilston is in the West Midlands



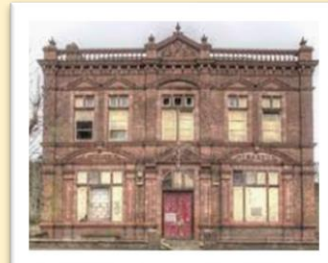
Buildings around Bilston



St Leonard's Church



Bilston Town Hall



Bilston Art College



Bilston Police Station



Stowlawn Primary School



Bilston College

Shops in Bilston



Bilston Market



Morrisons Supermarket



Lidl Supermarket



Major's Chip Shop

Key words	Definition
Map	A picture that shows you what a place looks like from the air.
market	A place where you can buy lots of different things from market stalls.
Supermarket	A large shop where you can buy lots of different things.
college	A place where young adults learn when they have left school.
Museum	A building that helps you find out about life in the past.
transport	Ways to travel from one place to another.
West Midlands	The part of the country where Bilston and Wolverhampton are.
Bungalow	How hot or cold it is outside.
leisure	Ways of spending your spare time
motorway	A fast road that helps you travel between cities and towns.
town	A place where lots of people live and work
city	A large town



Things to do in Bilston

Bert Williams Leisure Centre



Have you seen this building?
You can go swimming and play sports here!

Art Gallery and Museum

This is a great place to see art work and learn about history by looking at objects from the past.



East Park and Hickman Park



Bandstand



Flower Garden

Wet Play Area



The amazing new look for East Park showing the layout of the new play area

Flower Garden



Transport around Bilston

There are lots of ways to travel around Bilston.

Roads and Trams



The Black Country Route

This is a busy road that links Bilston to the motorway and other towns and cities.



The Metro

Trams can take you to Wolverhampton, West Bromwich and Birmingham.

Canals and Cycling



Wolverhampton to Birmingham canal

Boats can travel on the canals around Bilston. You can walk along the tow path.



Cycle Lanes

There are more cycle lanes now where you can ride your bike safely.

Where do I live?



Bungalows



Houses



Flats